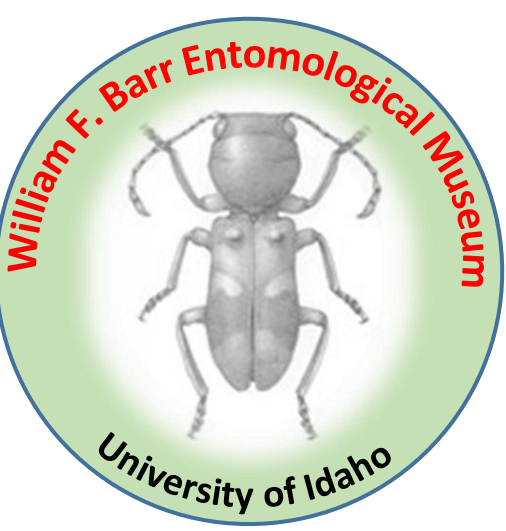


# I

# BAND-WINGED GRASSHOPPERS OF IDAHO



University of Idaho

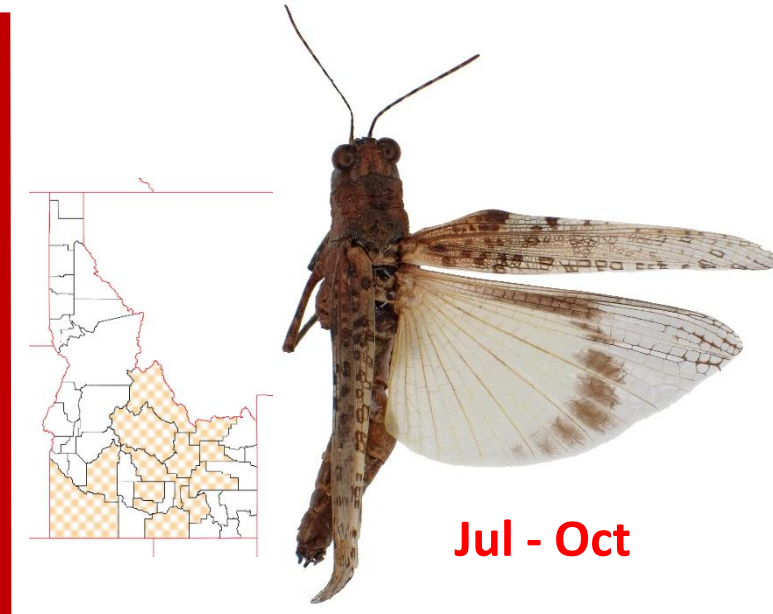
Band-winged grasshoppers (Acrididae: Oediponinae) usually have brightly colored hind wings to startle predators, and many produce a distinctive crackling sound while flying. Thirty-eight species are known in Idaho, illustrated here with their color variants. Distribution maps are based on museum specimen labels (Barr Museum in Moscow, Orma Smith Museum in Caldwell). *Camnula pellucida* is the only significant crop pest among them.

## ANCONIINI



May - Jun

*Anconia integra*  
(25-45 mm)



Jul - Oct

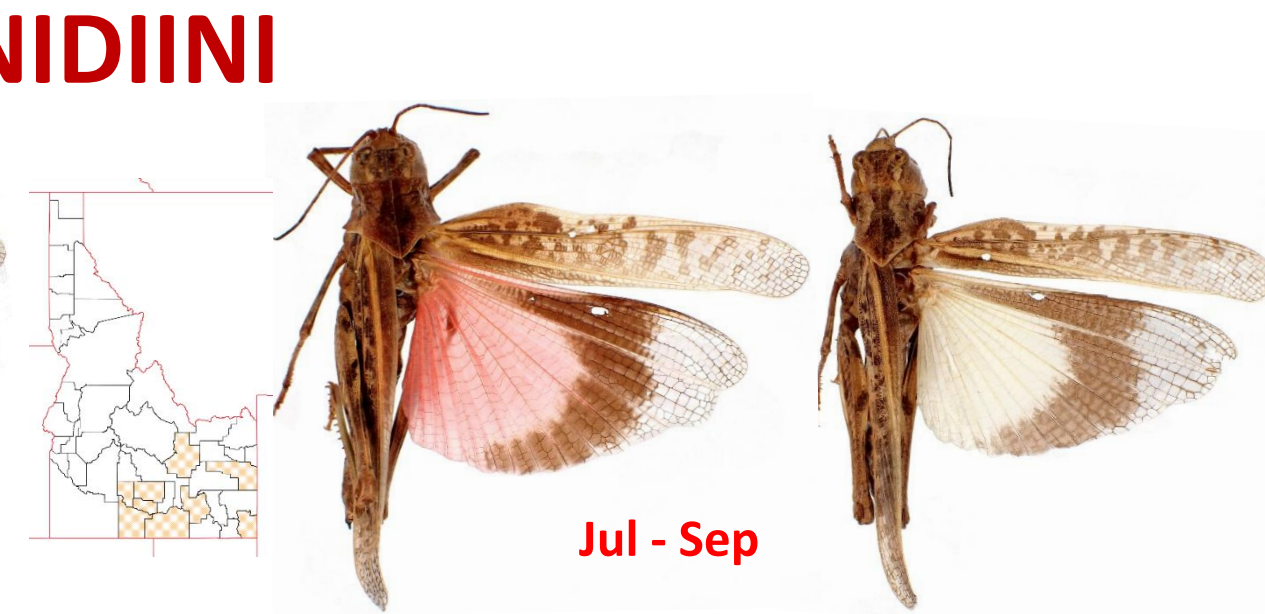
*Derotmema haydenii*  
(18-30 mm)



Jul - Aug

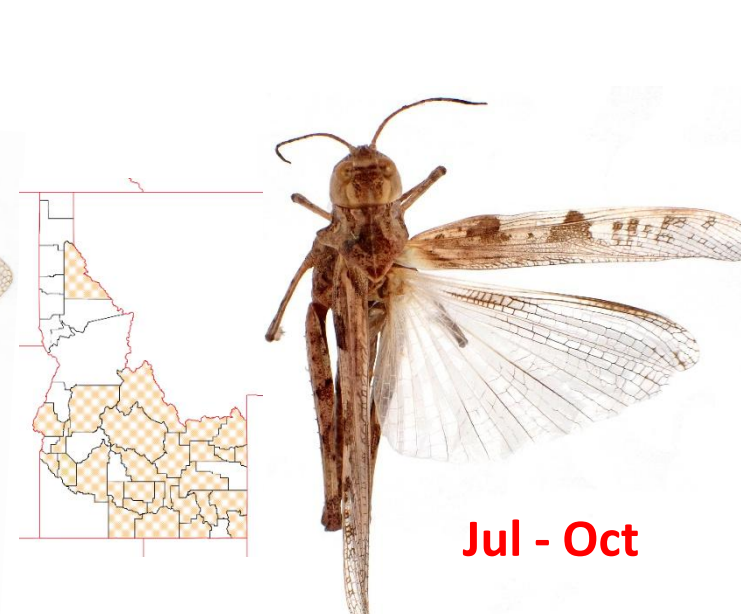
*Metator nevadensis*  
(22-36 mm)

## PSINIDIINI



Jul - Sep

*Metator pardalinus*  
(26-45 mm)



Jul - Oct

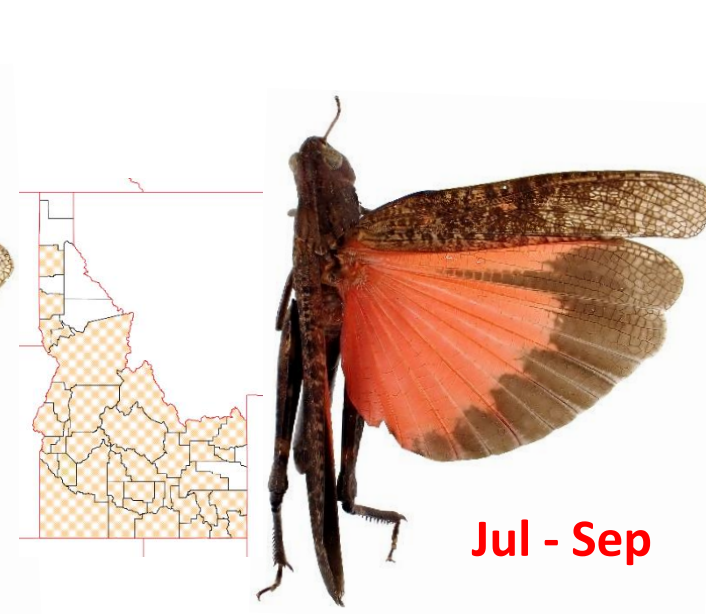
*Trachyrhachys kiowa*  
(20-30 mm)

## ARPHIINI



May - Jul

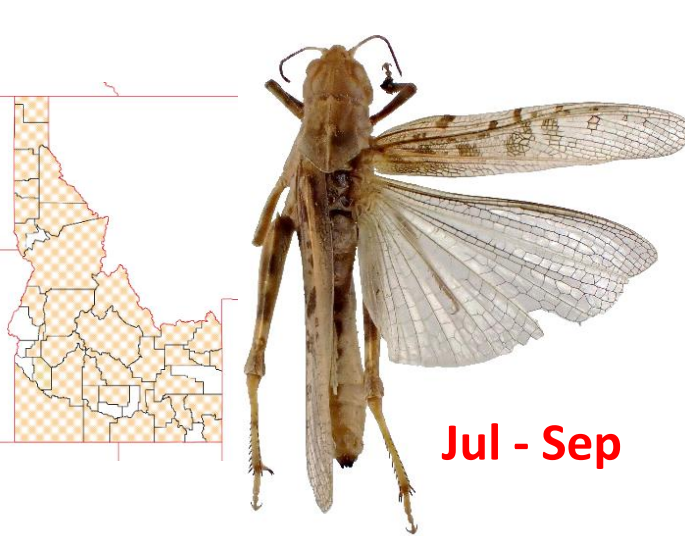
*Arphia conspersa*  
(20-35 mm)



Jul - Sep

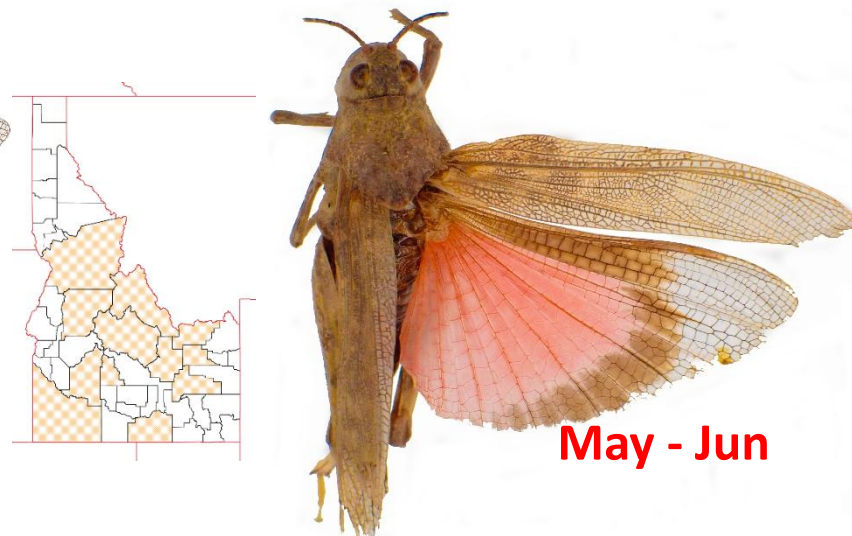
*Arphia pseudonietana*  
(30-47 mm)

## HIPPISCINI



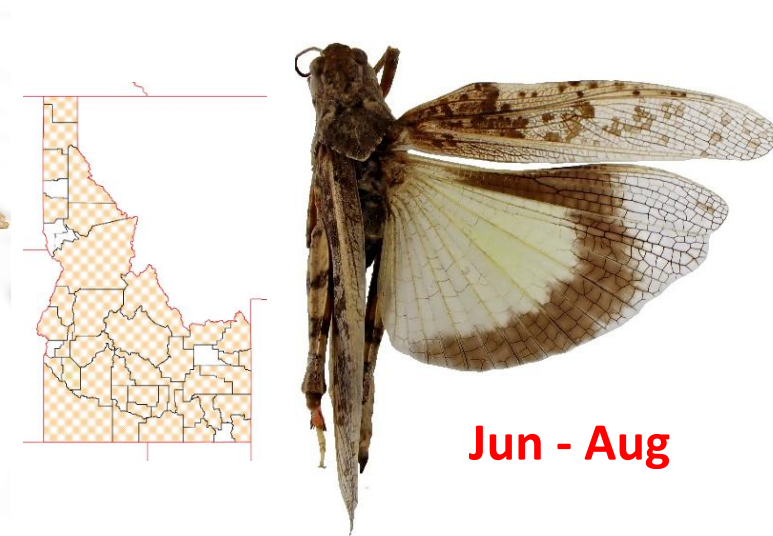
Jul - Sep

*Camnula pellucida*  
(20-31 mm)



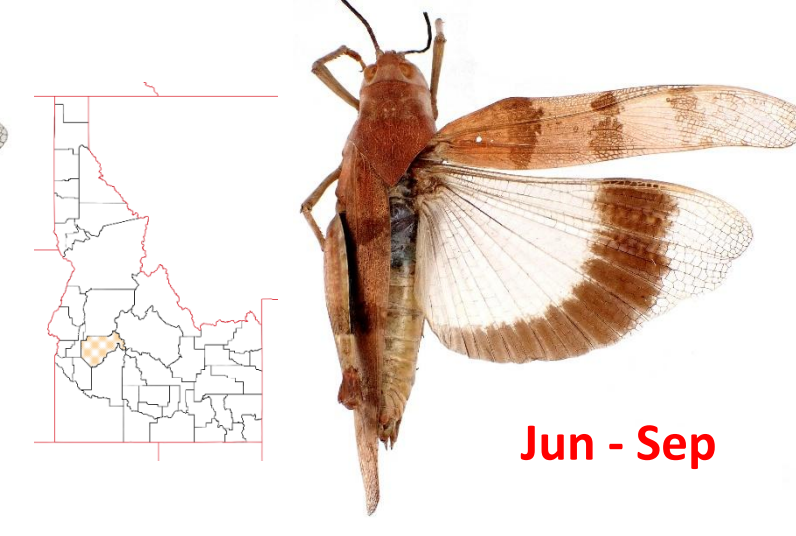
May - Jun

*Cratypedes lateritius*  
(26-46 mm)



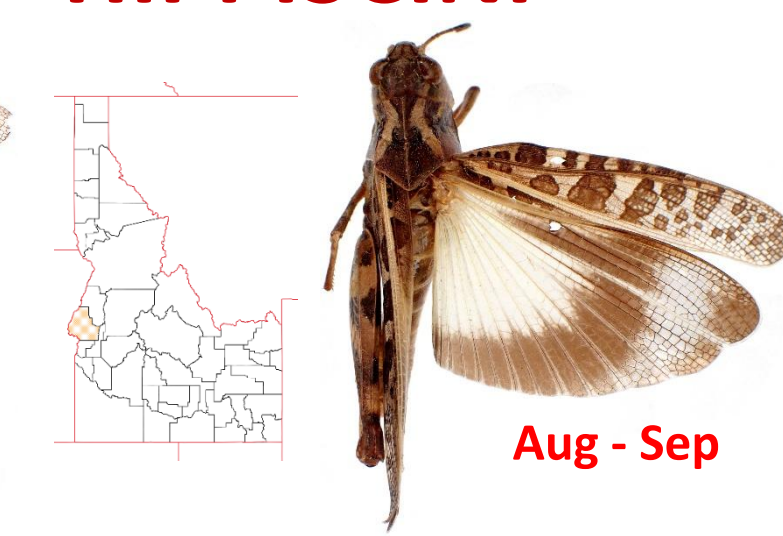
Jun - Aug

*Cratypedes neglectus*  
(24-40 mm)



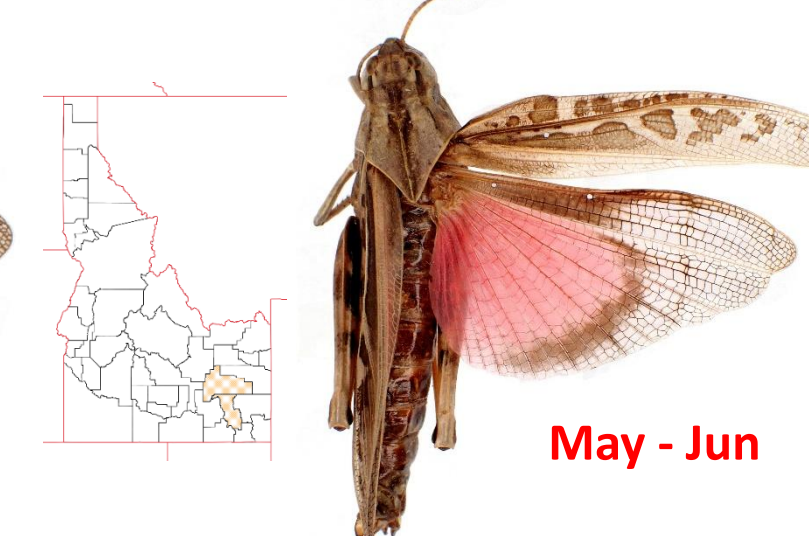
Jun - Sep

*Hadrotettix trifasciatus*  
(26-50 mm)



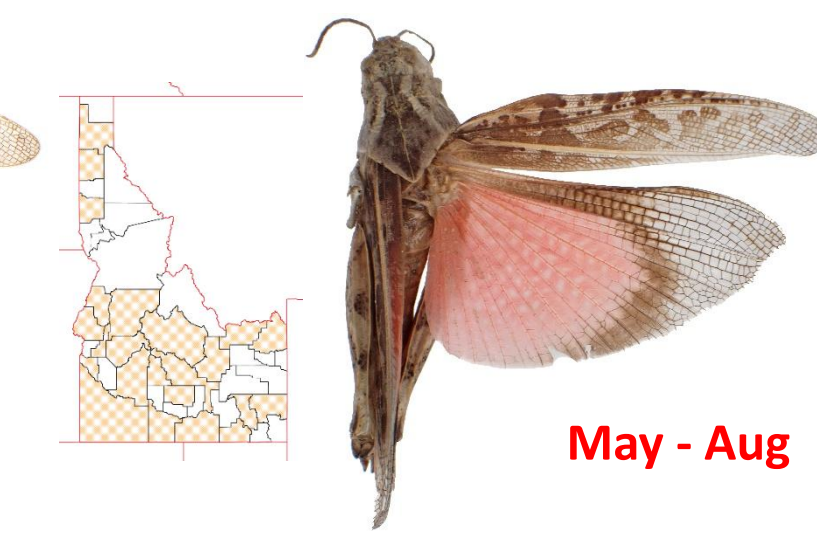
Aug - Sep

*Hippiscus ocelote*  
(28-54 mm)



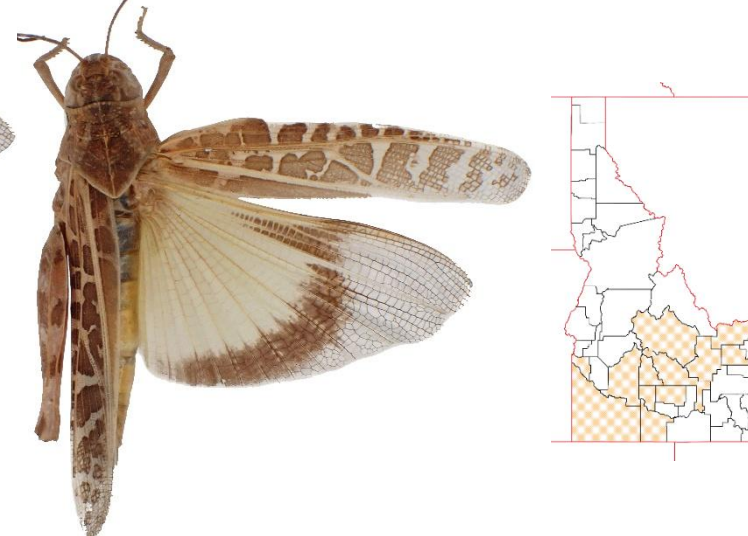
May - Jun

*Pardalophora apiculata*  
(32-58 mm)



May - Aug

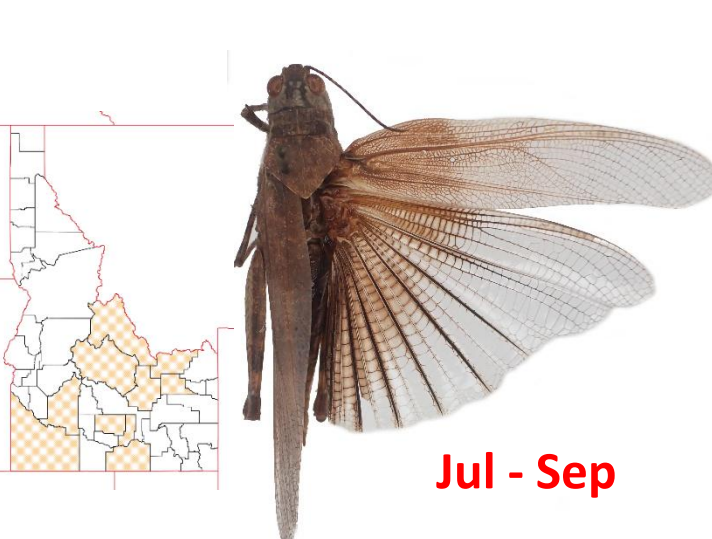
*Xanthippus corallipes*  
(32-45 mm)



Apr - Jul

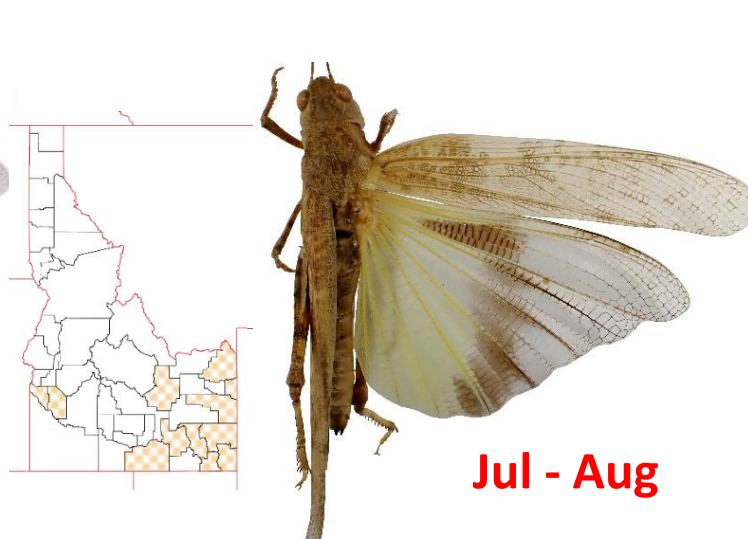
*Xanthippus montanus*  
(30-46 mm)

## TRIMEROTROPINI



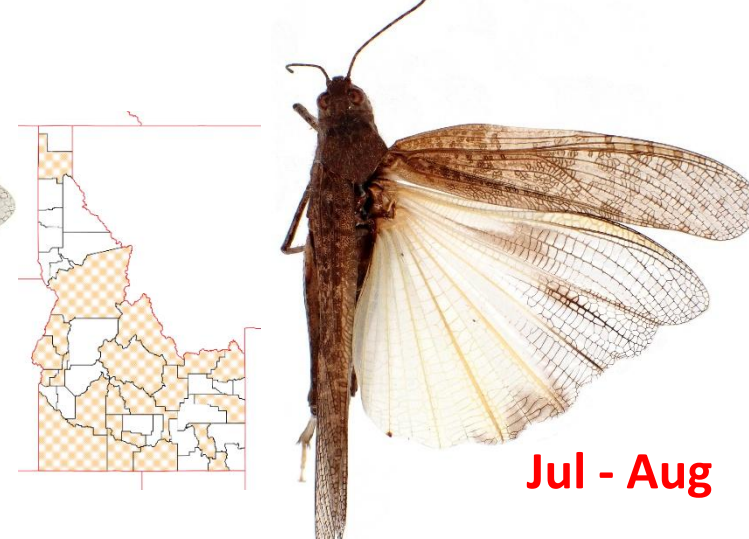
Jul - Sep

*Circotettix carlinianus*  
(29-46 mm)



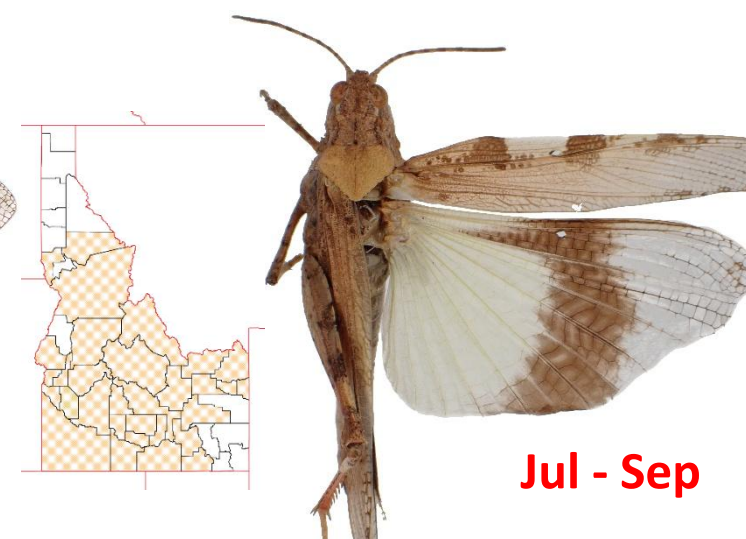
Jul - Aug

*Circotettix rabula*  
(30-49 mm)



Jul - Aug

*Circotettix undulatus*  
(35-44 mm)



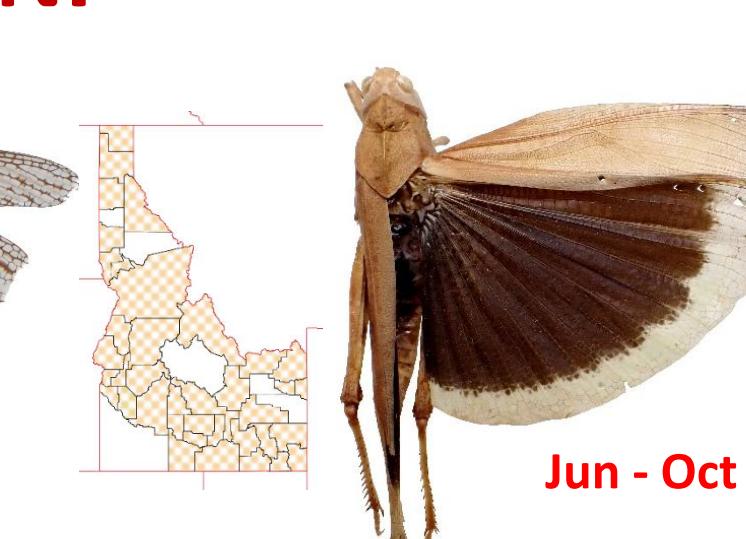
Jul - Sep

*Conozoa sulcifrons*  
(19-37 mm)



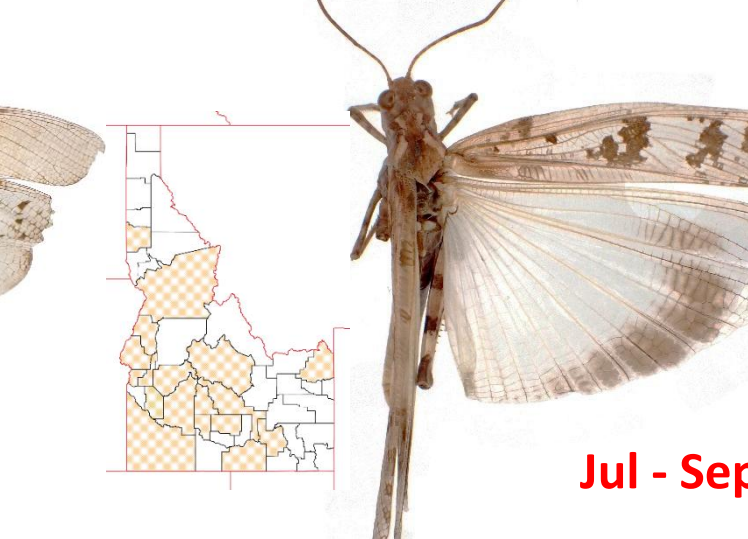
Jul - Sep

*Conozoa texana*  
(19-37 mm)



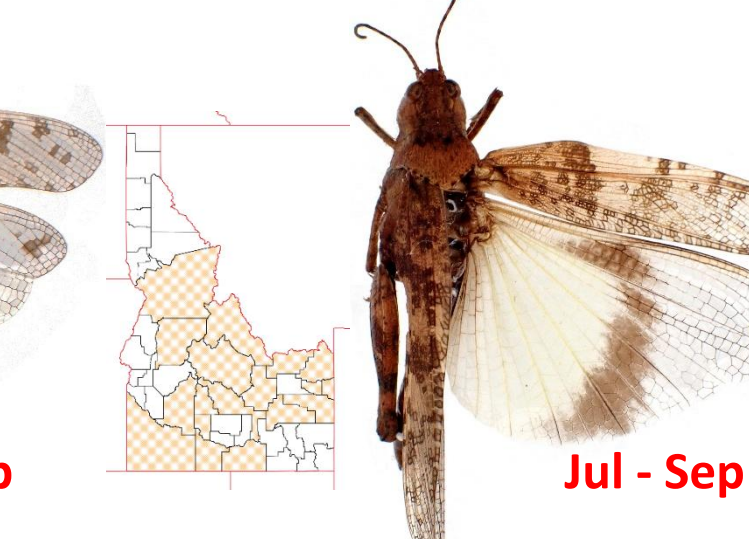
Jun - Oct

*Dissosteira carolina*  
(37-58 mm)



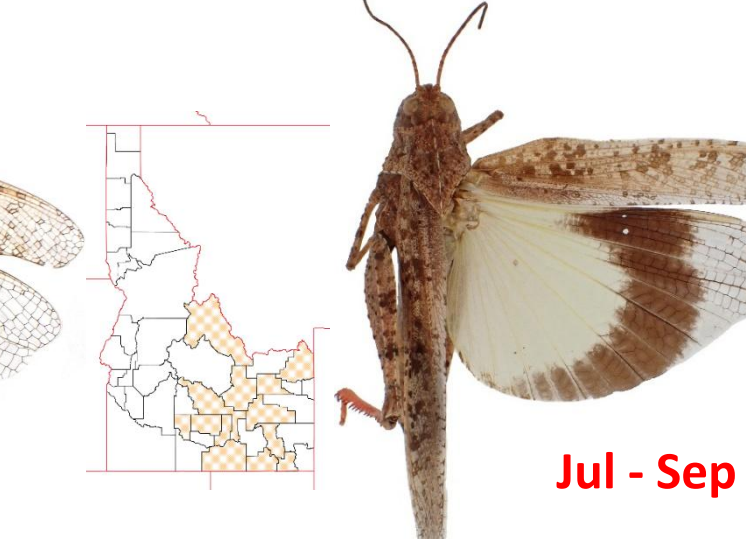
Jul - Sep

*Dissosteira spurcata*  
(33-44 mm)



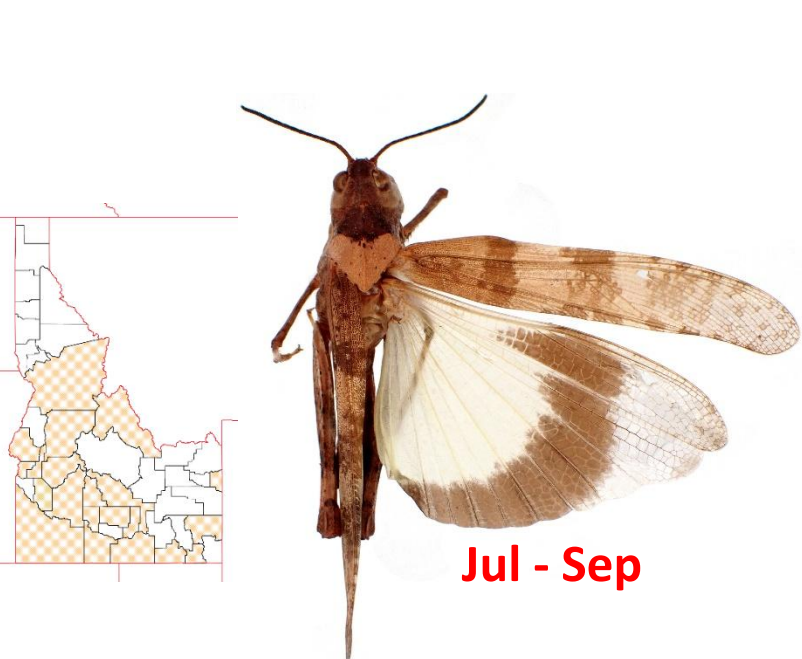
Jul - Sep

*Spharagemon campestris*  
(25-40 mm)



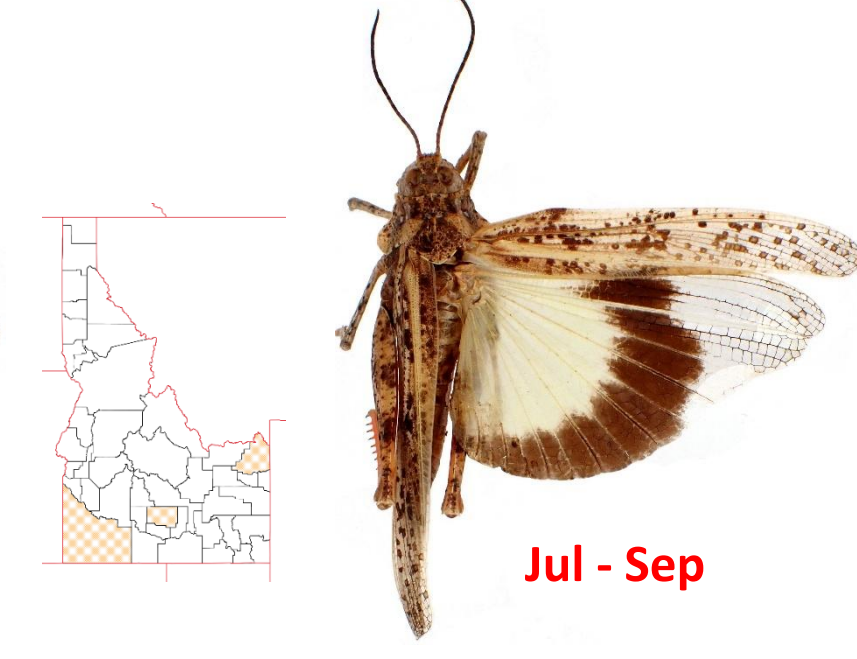
Jul - Sep

*Spharagemon collaris*  
(23-37 mm)



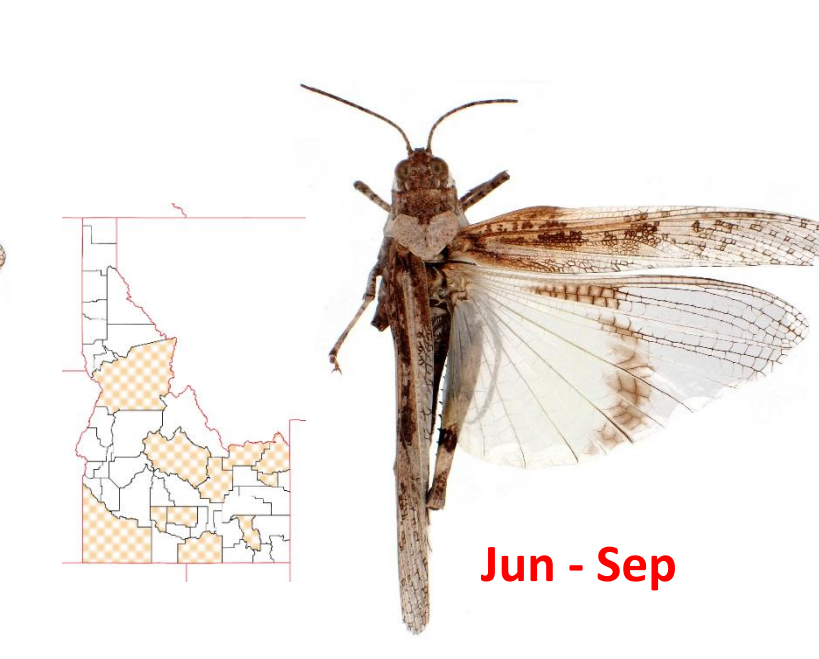
Jul - Sep

*Spharagemon equale*  
(29-47 mm)



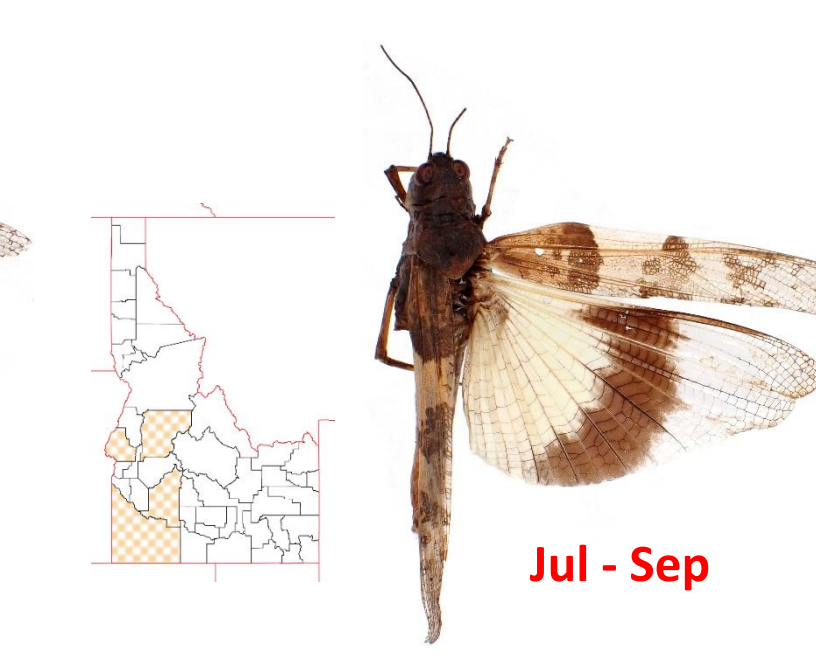
Jul - Sep

*Trimerotropis agrestis*  
(24-43 mm)



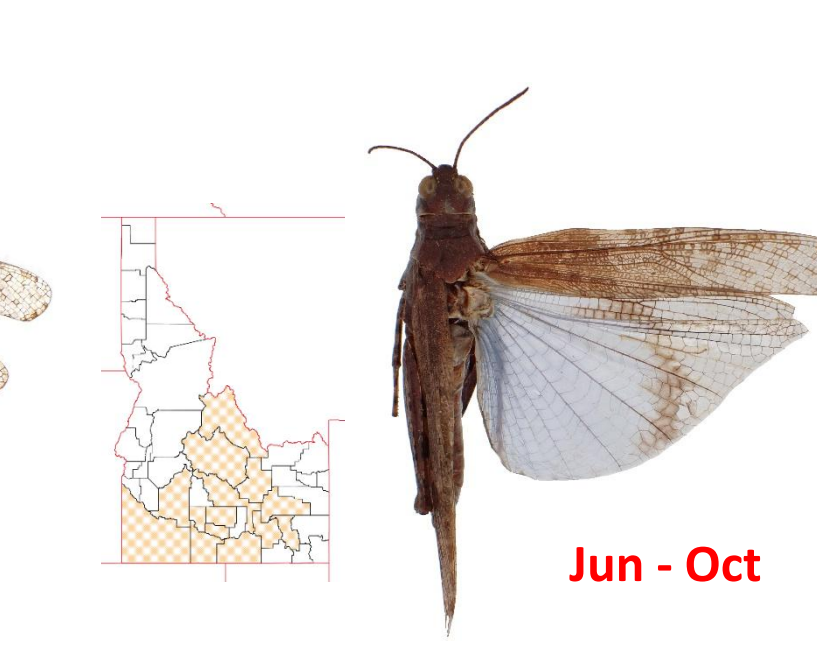
Jun - Sep

*Trimerotropis arenacea*  
(22-36 mm)



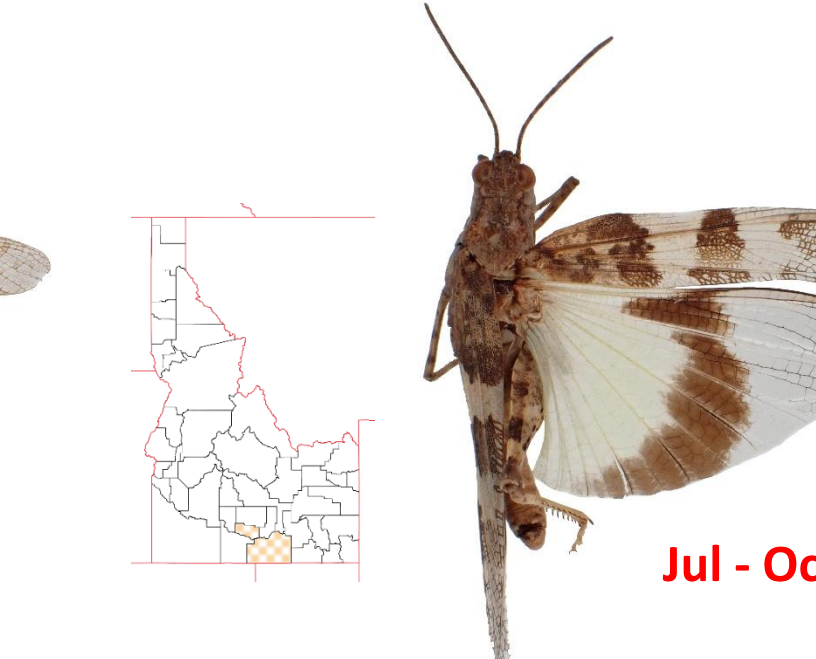
Jul - Sep

*Trimerotropis californica*  
(25-43 mm)



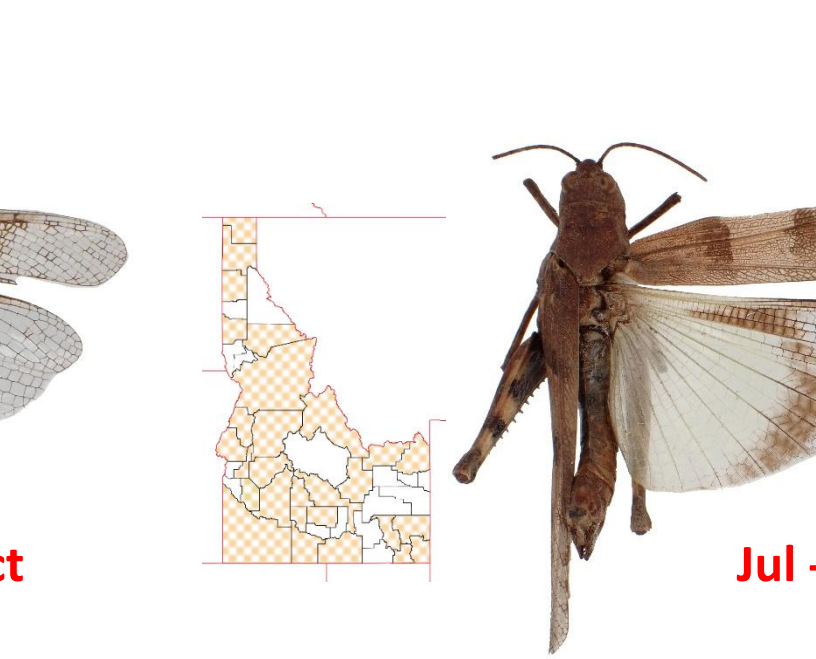
Jun - Oct

*Trimerotropis cyaneipennis*  
(25-40 mm)



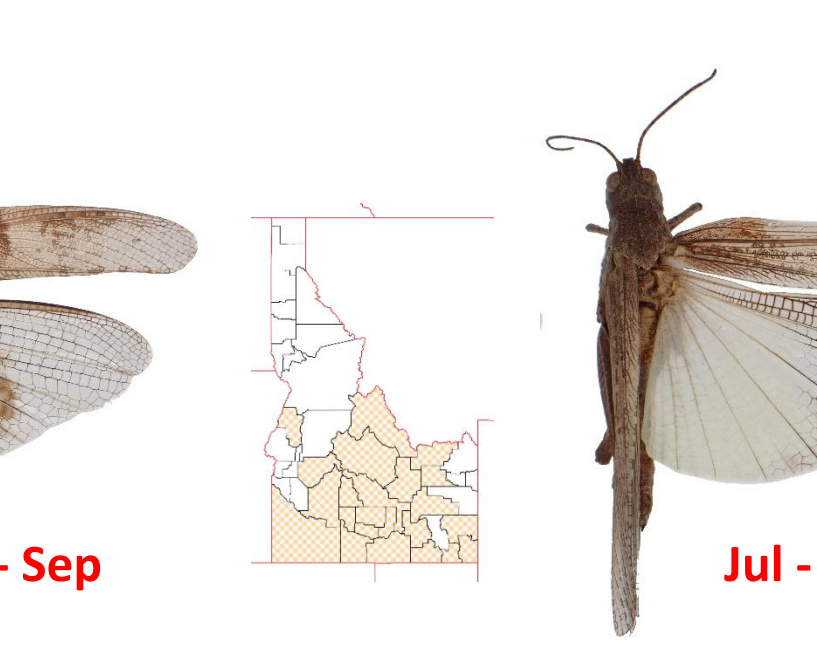
Jul - Oct

*Trimerotropis diversellus*  
(25-45 mm)



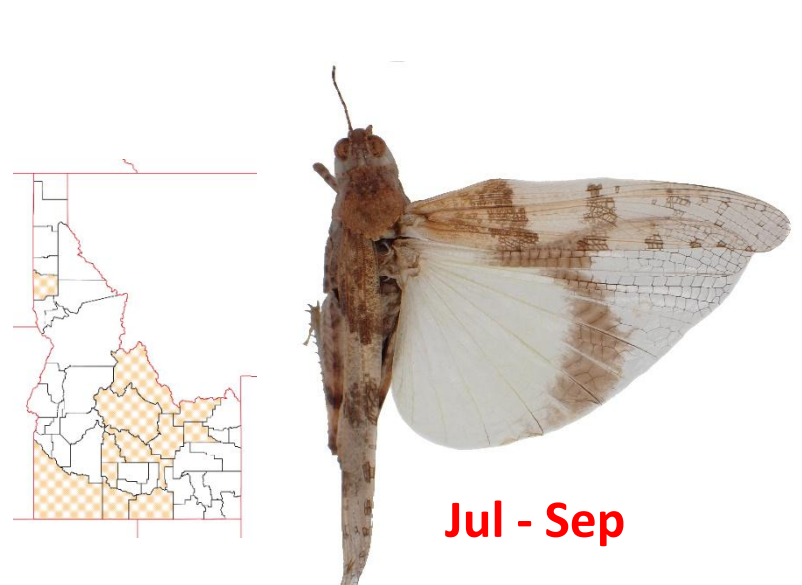
Jul - Sep

*Trimerotropis fontana*  
(22-38 mm)



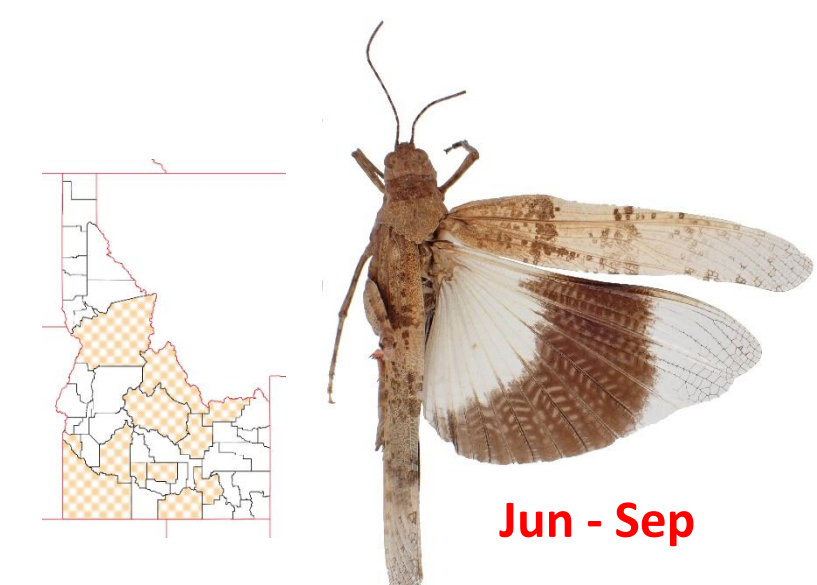
Jul - Sep

*Trimerotropis gracilis*  
(26-36 mm)



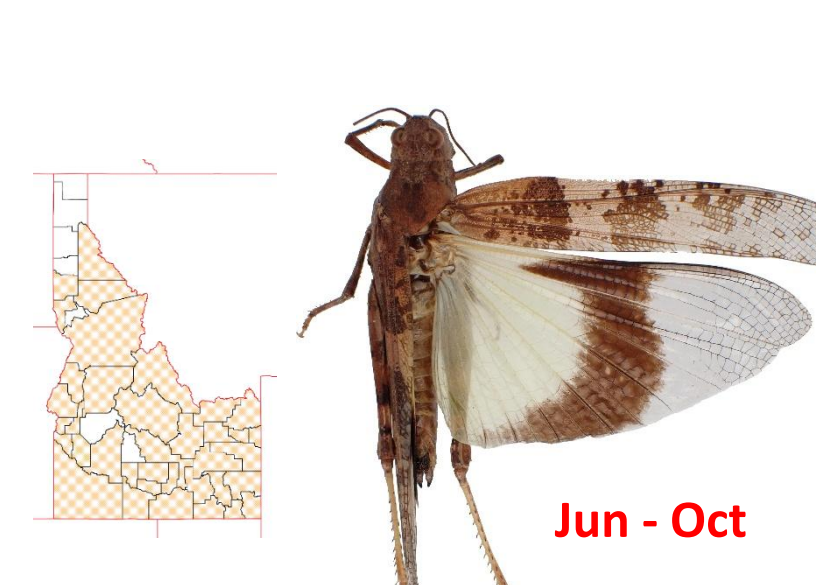
Jul - Sep

*Trimerotropis inconspicua*  
(22-33 mm)



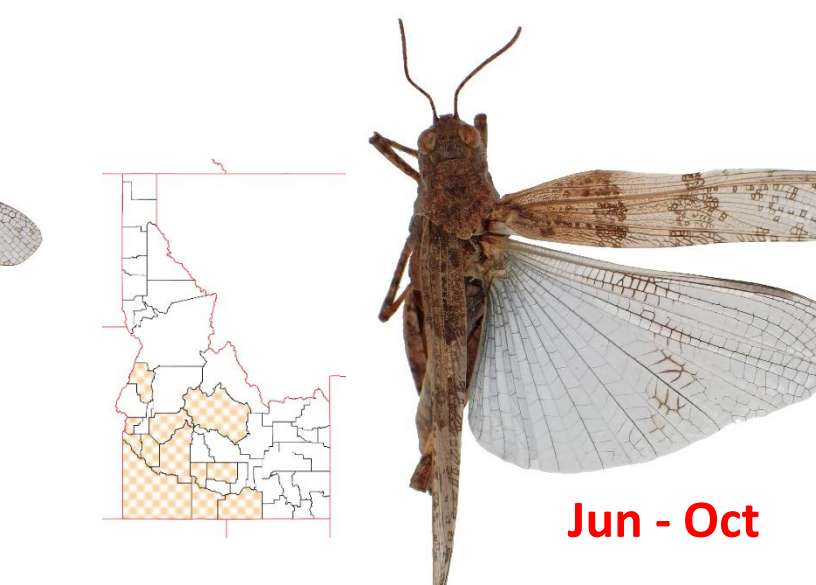
Jun - Sep

*Trimerotropis latifasciata*  
(30-49 mm)



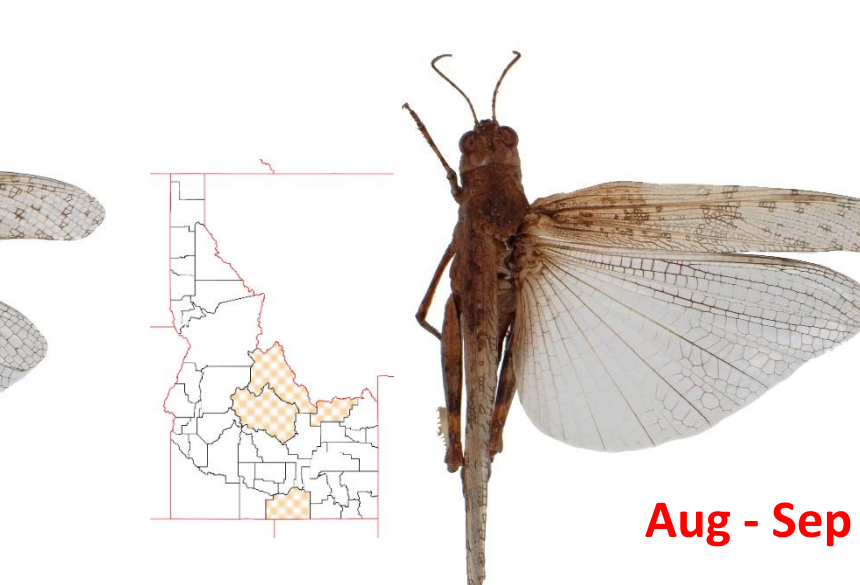
Jun - Oct

*Trimerotropis pallidipennis*  
(25-45 mm)



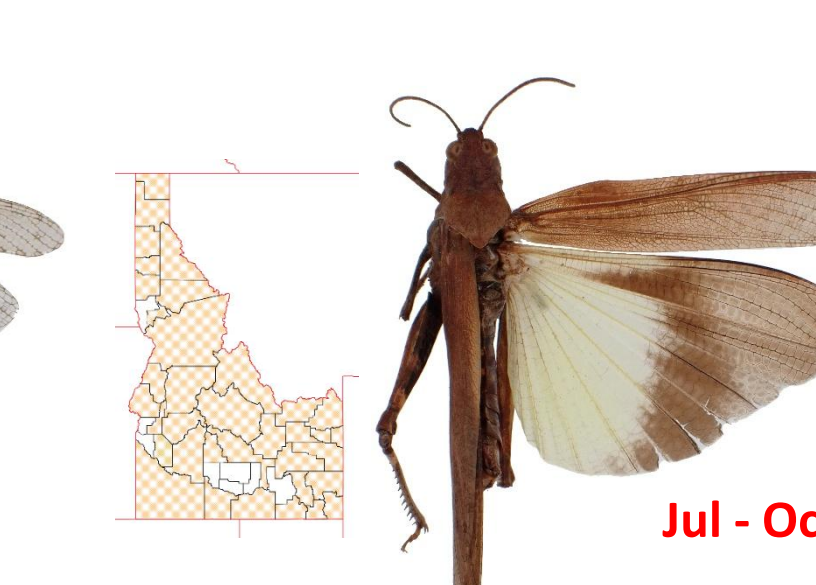
Jun - Oct

*Trimerotropis pseudofasciata*  
(24-42 mm)



Aug - Sep

*Trimerotropis sparsa*  
(24-42 mm)



Jul - Oct

*Trimerotropis verruculata suffusa*  
(28-38 mm)

© Copyright 2026 University of Idaho Barr Entomological Museum. Downloading, printing, sharing and distribution are allowed. Partial reproduction for non-commercial purposes allowed if original source is acknowledged. Unauthorized sale is strictly prohibited. This poster was compiled by Eli Carmona (photography, photo editing), Luc Leblanc (research, design, maps) and Jack Oland (specimen identification). All photographed specimens are digitized (<https://ecdysis.org>) and deposited at the William F. Barr Entomological Museum (University of Idaho, Moscow, ID).