

ROOM MEASUREMENTS

THEOPHILUS TOWER



A popular choice for first-year students, the Tower provides a more communal setting that lends social and academic support to students transitioning from high school to college. Currently in the process of being renovated, floors 6–11 have a new look and include air conditioning.

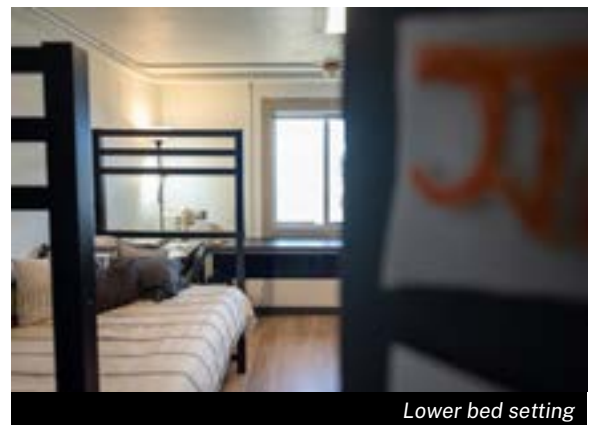
General building information

(Renovated spaces)

Classification:	Freshman
Room type:	Double rooms
Gender breakdown:	Separated by floor
Air conditioning:	Only on floors 6-11 for seasonal use
Kitchen:	Located on first floor
Occupancy:	380 Students
Study rooms:	Located on first floor and odd floors
Lounges:	There is a lounge located on every floor Hang out spaces are also in the basement
Bike storage:	Located in basement
Movable furniture:	Yes (floors 6-11); No (floors 2-5)
Number of floors:	10 floors
Bathroom style:	Community Bathrooms, cleaned daily by professional staff
Amenities:	Fridge and microwave unit
Bed style:	Students living on floors 6-11 can have their bed lofted or request the bed lowered to a traditional height



Loft bed setting



Lower bed setting

Room measurements

(All measurements are approximate and for renovated spaces)

General room measurement

Aproximate Dimensions: 14' L × 11' W
Estimated sq ft: 125 sq ft (actual may vary)
Floor to ceiling: 94 H

Bed

Bed Frame: 85.5" W × 41" D × 70" H
Loft Setting: 82" W × 39" D × 55" H
Ceiling Clearance (from lofted bed): 33" H
Under-Bed Storage (lofted): 55" H
Lowest Setting: 82" W × 39" D × 30" H
Under-Bed Storage (lowest): 30" H

Mattress

Twin XL Mattress
80" L × 36" W × 7" H

Desk (1 drawer)

Desk: 36" W × 18" D × 31" H
Drawer: 14.25" W × 11" D × 2.25" H
Leg Room Clearance: 32.75" W × 22" D × 25.25" H
Chair Height: 18" H

Wardrobe

Wardrobe: 36" W × 18" D × 72" H
Height to Clothing Bar: 62" H
Top of Wardrobe to Ceiling: 21.5" H

Dresser

Dresser (2 Drawers): 33" W × 18" D × 72" H
Drawer Interior: 29" W × 13" D × 5" H

Window

Frame: 44" W × 47" H
Window Sill: 46.5" W × 4" D

Door

36" W × 92" H

Fridge/microwave

3.1 cu ft: 19" W × 20" D × 43.5" H

Distance between beds

76"

Heating Unit Bench

19" W × 131" D × 28.5" H

Shower

Shower Head Height: 76" H



Wardrobe



Desk and chair



Dresser



MicroFridge



@UIdahoHousing

uidaho.edu/housing
housing@uidaho.edu
208-885-6571



University of Idaho
Housing and Residence Life