

I GIANT SILK MOTHS AND SPHINX MOTHS OF IDAHO

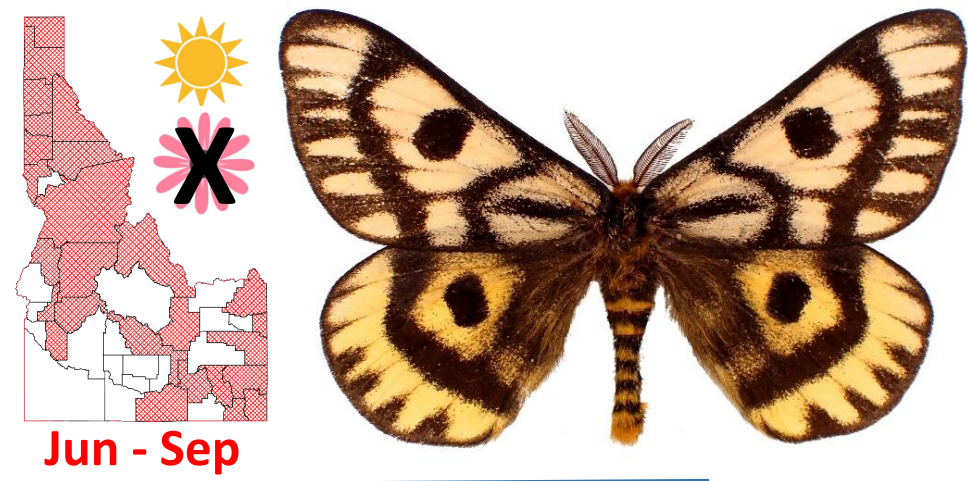
Twenty-eight species of giant silk moths (Saturniidae) and sphinx moths (Sphingidae) are known in Idaho, and the presence of an additional species (*Smerinthus astarte*) requires confirmation. Additional information on their diagnostic characters and life histories is available online (<https://pnwmoths.biol.wvu.edu/>).

University of Idaho

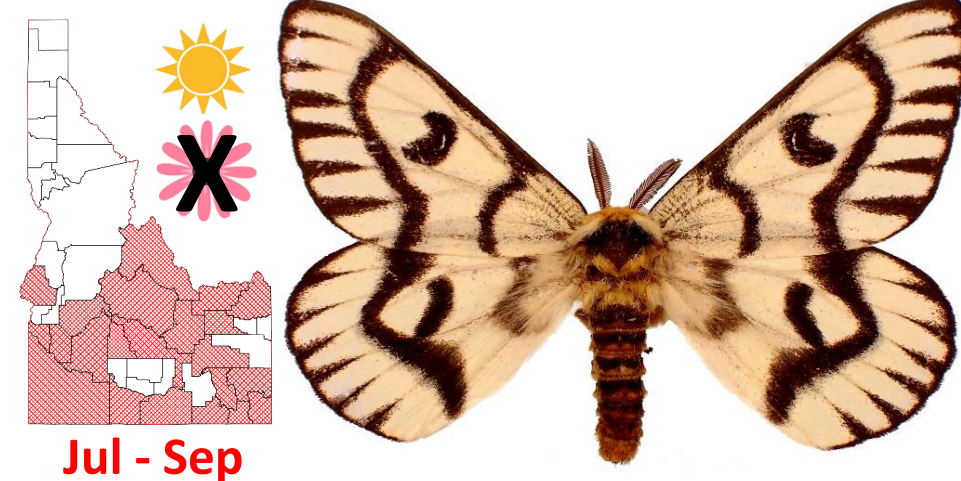


SATURNIIDAE

HEMILEUCINAE



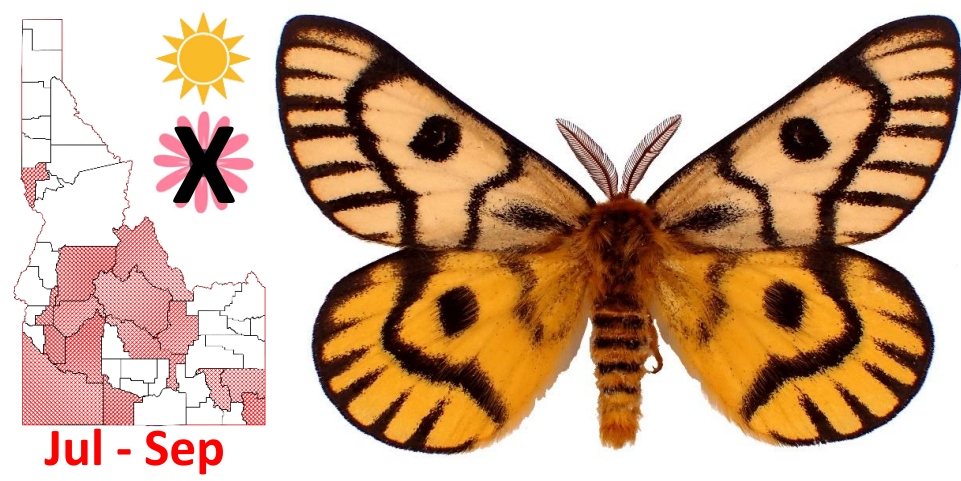
Hemileuca eglanterina (Boisduval)
Elegant sheep moth. In Open forest and shrubland. Larvae generalists on hardwood and shrubs.



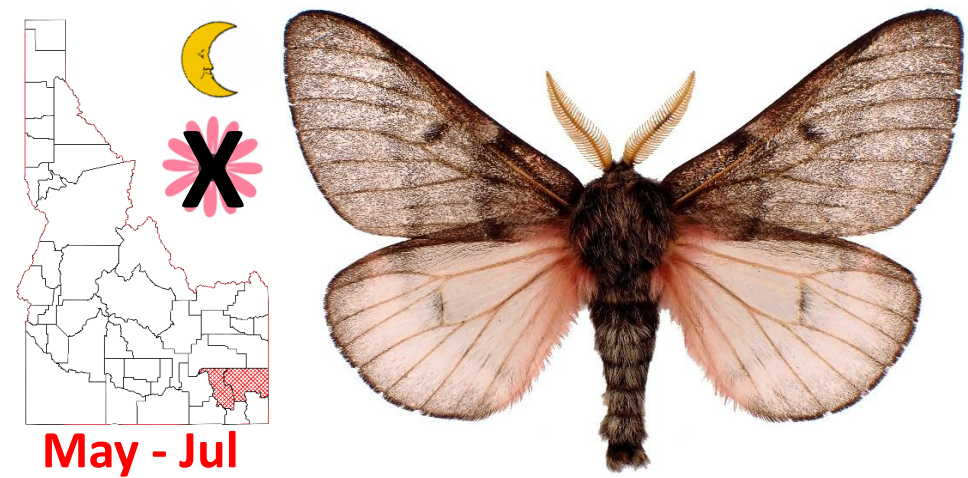
Hemileuca hera (Harris)
Hera buck moth. In subalpine sagebrush meadows. Larvae on sagebrush.



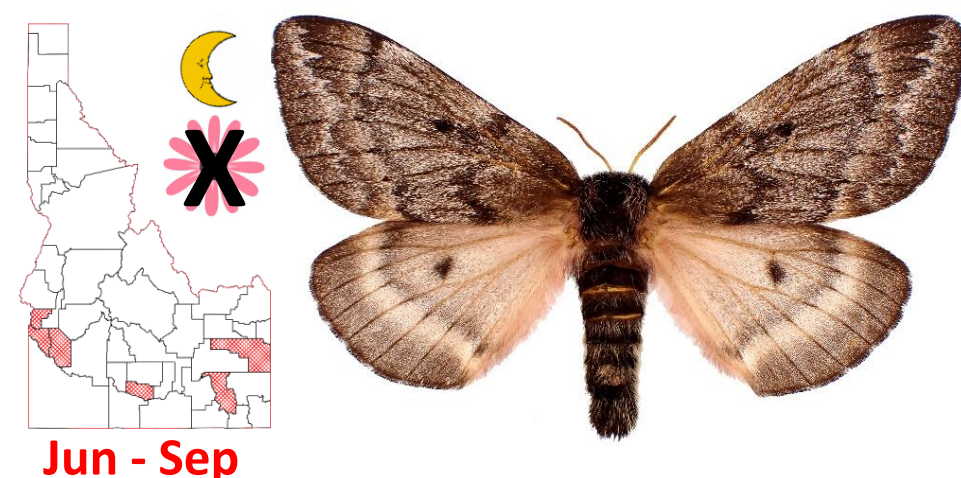
Hemileuca nevadensis Stretch
Nevada buck moth. In riparian habitats. Larvae on willow and cottonwood.



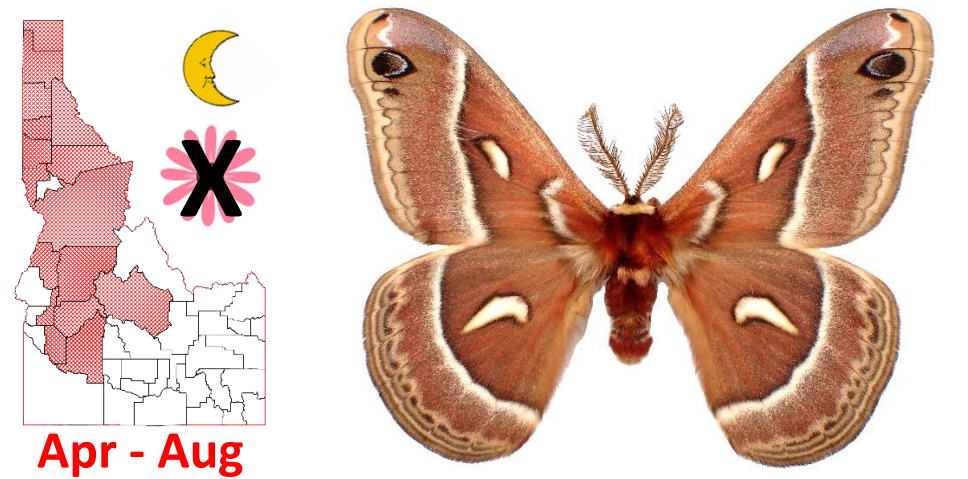
Hemileuca nuttalli (Strecker)
Nuttall's sheep moth. In juniper woodlands and upper sagebrush rangelands. Larvae on bitterbrush, snowberry and currant.



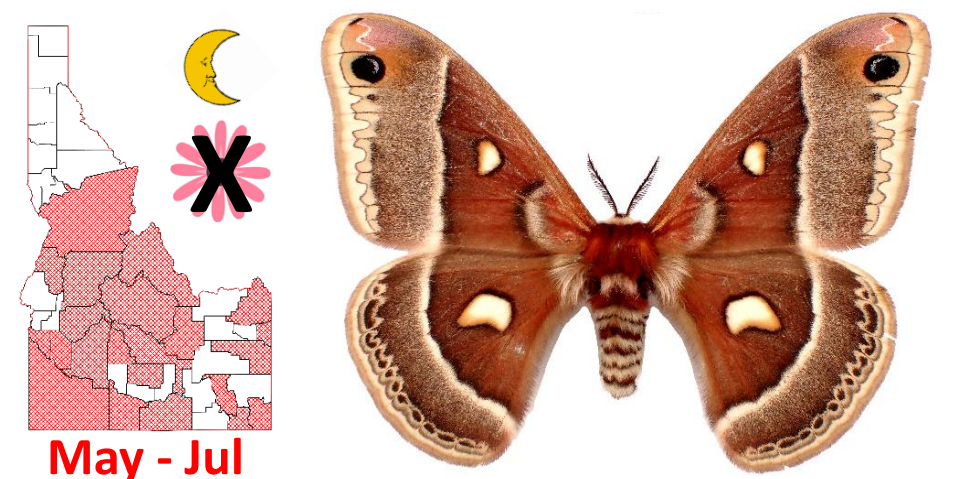
Coloradia doris Barnes
Doris' pine moth. In mountain forests with pine (larval food).



Coloradia pandora Blake
Pandora pine moth. In forests with pine (larval food).



Hyalophora euryalus (Boisduval)
Ceanothus silkmoth. In forest and arid rangeland. Larvae generalists on woody shrubs and trees.



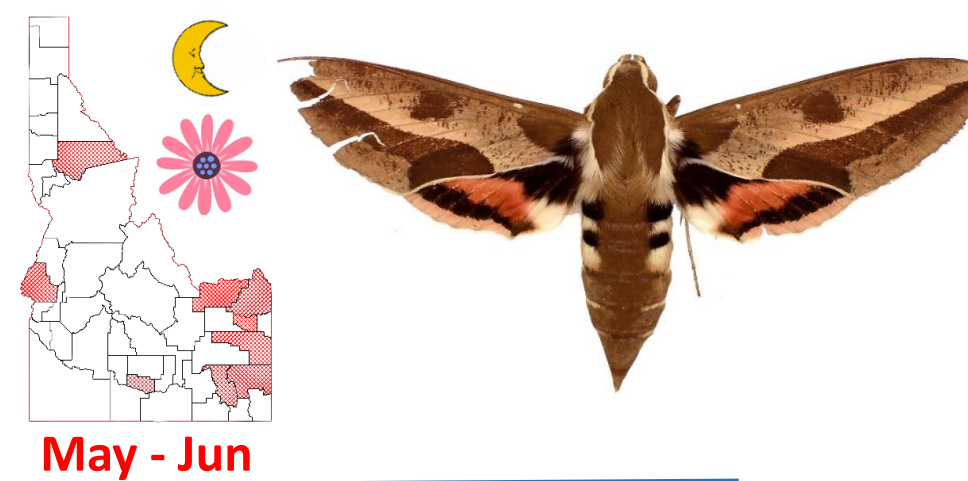
Hyalophora gloveri (Strecker)
Glover's silkmoth. In riparian habitats or montane shrubland. Larvae generalists on broad-leaved shrubs and trees.



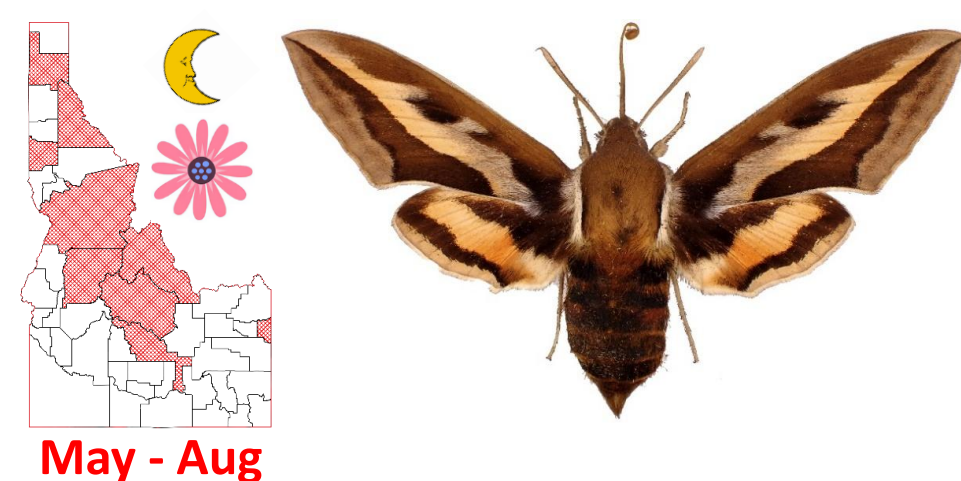
Antheraea polyphemus (Cramer)
Polyphemus moth. In woodlands, orchards, wetlands. Larvae generalists on hardwood trees and shrubs.

SPHINGIDAE

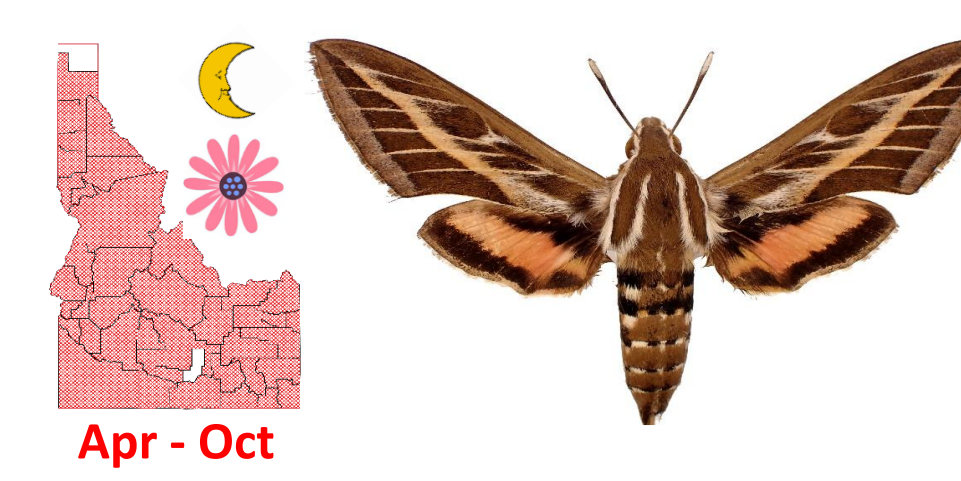
MACROGLOSSINAE



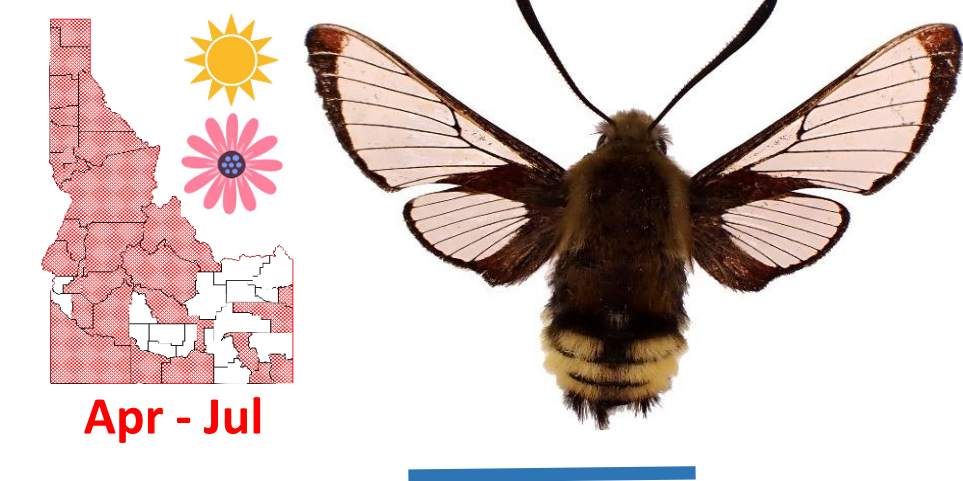
Hyles euphorbiae (Linnaeus)
Leafy spurge hawk moth. In sagebrush rangelands and prairies. Introduced from Eurasia to control leafy spurge.



Hyles gallii (Rottemburg)
Gallium sphinx moth. In conifer forest and open meadows. Larvae on fireweed.



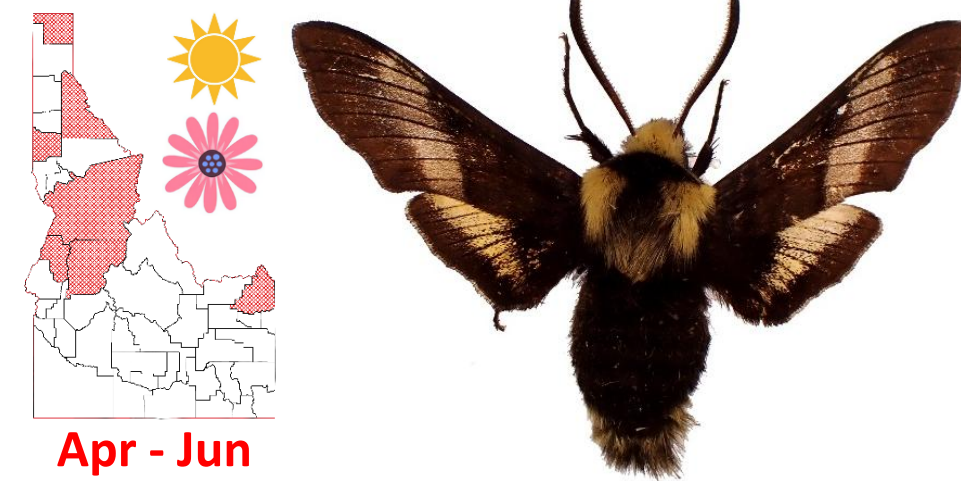
Hyles lineata (Fabricius)
White-lined sphinx moth. Broad range of habitats, including urban environments. Larvae on fireweed and evening primrose.



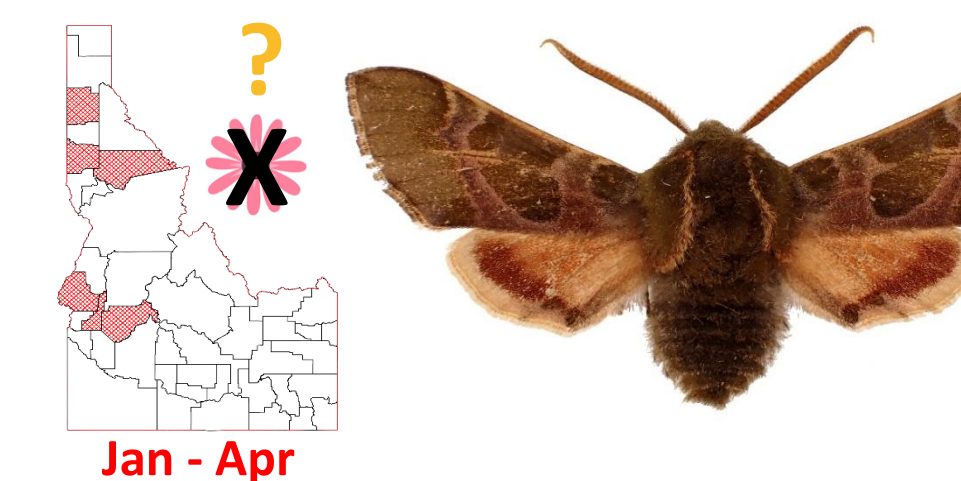
Hemaris thetis (Boisduval)
Rocky Mountain clearing moth. In open mixed forest and riparian habitats. Larvae on honeysuckle and snowberry. Bumblebee mimic.



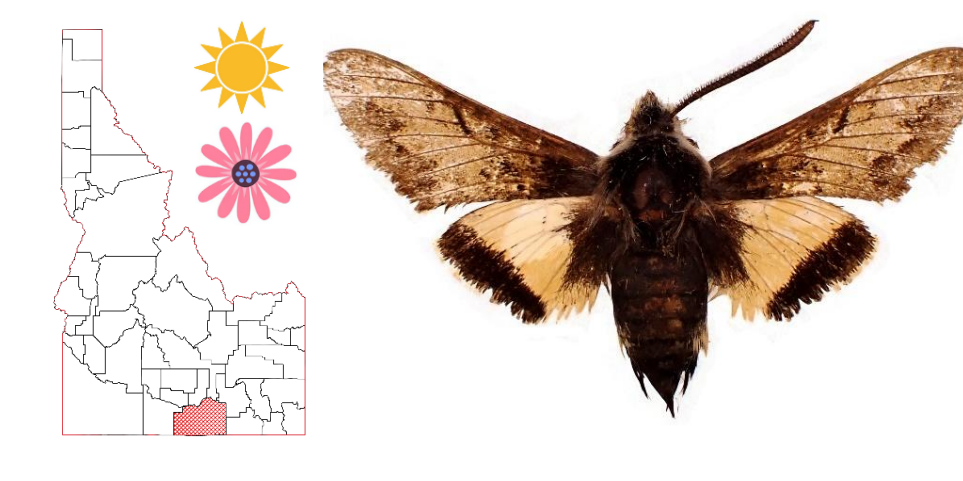
Proserpinus clarkiae (Boisduval)
Clark's day sphinx moth. In open grassland and mountain meadows. Larvae on Onagraceae.



Proserpinus flavofasciata (Walker)
Yellow-banded day sphinx moth. In subalpine meadows. Larvae on fireweed. Bumblebee mimic.



Proserpinus lucidus (Boisduval)
Bear sphinx moth. In open ponderosa pine forests, juniper woodlands, and dry sagebrush steppe. Larvae on Onagraceae.

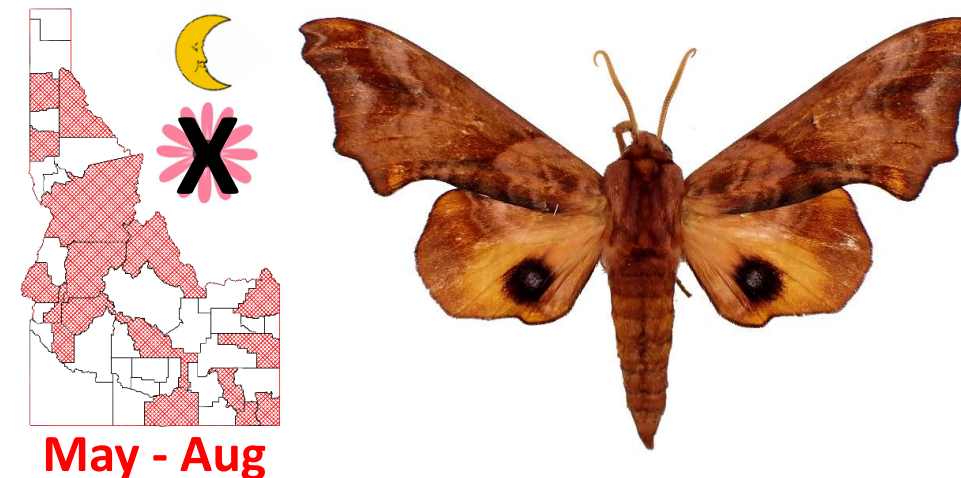


Euproserpinus wiesti Grote & Robinson
Prairie sphinx moth. Larvae on Onagraceae. IUCN-listed critically endangered species.

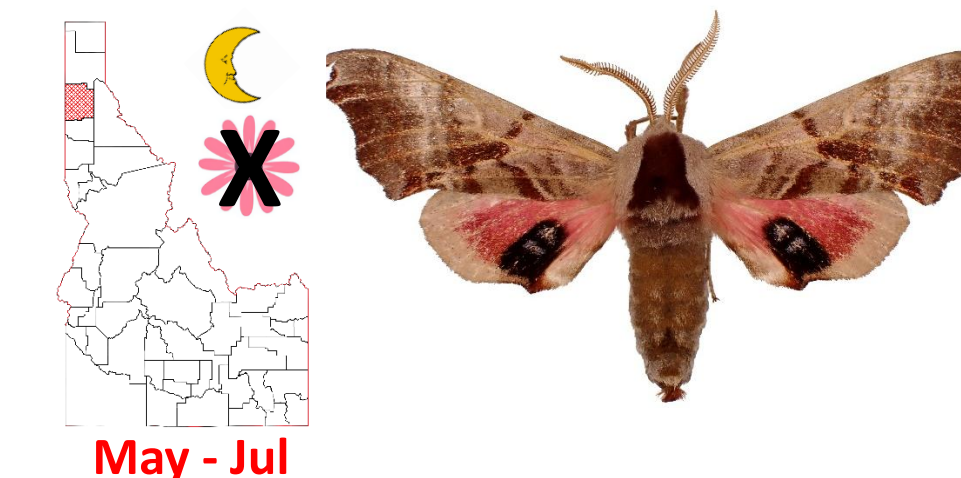
SMERINTHINAE



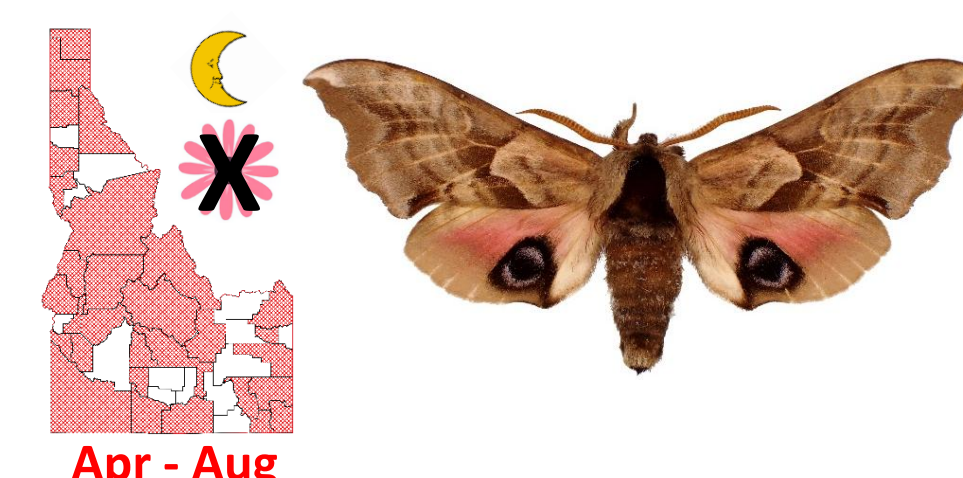
Paonias excaecata (Smith)
Blind-eyed sphinx moth. In riparian habitats. Larvae on hardwood trees and shrubs.



Paonias myops (Smith)
Small-eyed sphinx moth. In riparian habitats and mixed hardwood-conifer forest. Larvae on hardwood trees and shrubs.



Smerinthus jamaicensis (Drury)
Twin-spotted sphinx moth. In deciduous hardwood forest and riparian habitats. Larvae on hardwood trees and shrubs.

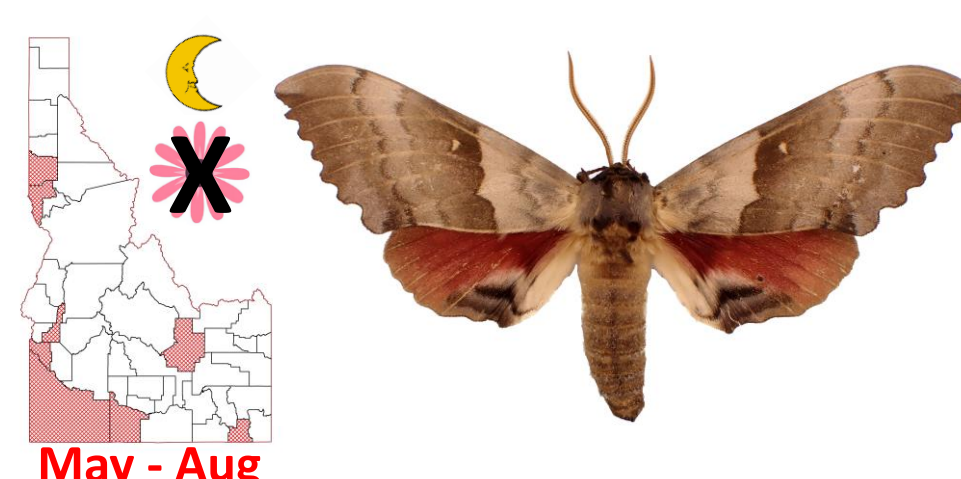


Smerinthus ophthalmica Boisduval
Western eyed sphinx moth. In forest, riparian habitats, and urban habitats. Larvae on willow and cottonwood.

SMERINTHINAE

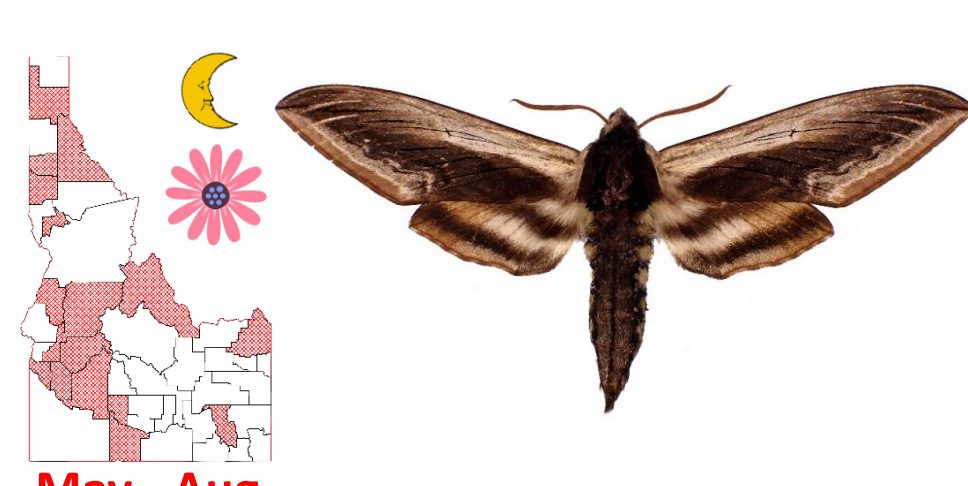


Pachysphinx modesta (Harris)
Big poplar sphinx moth. In mixed hardwood-conifer forest. Larvae on willow and cottonwood.



Pachysphinx occidentalis (Edwards)
Western poplar sphinx moth. In riparian habitats. Larvae on willow and cottonwood.

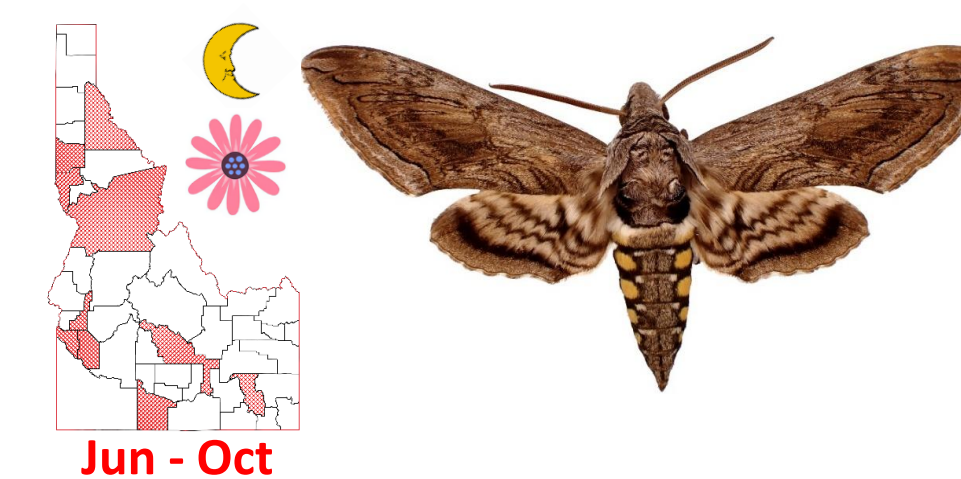
SPHINGINAE



Sphinx drupiferarum Smith
Wild cherry sphinx moth. In canyons and riparian habitats. Larvae on cherry trees.

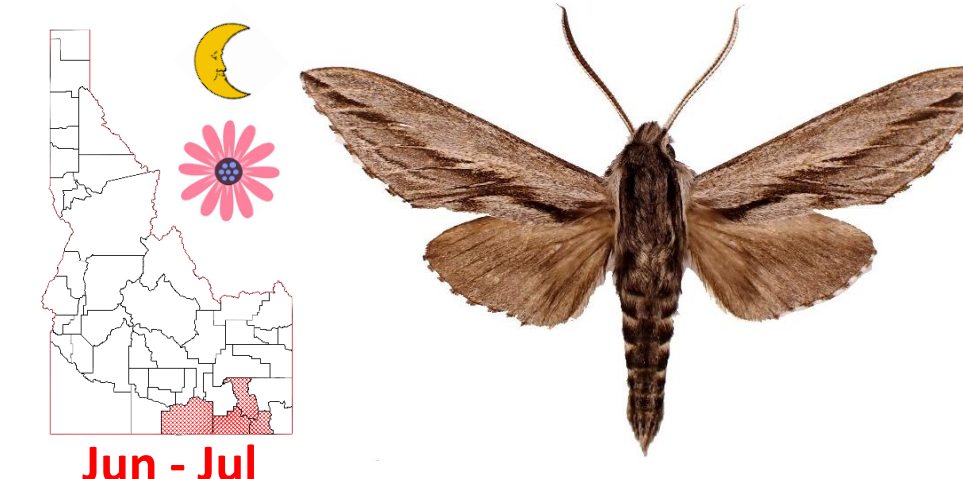


Sphinx perelegans Edwards
Elegant sphinx moth. In mixed hardwood-conifer forest. Larvae believed to feed on cherry trees.



Manduca quinquemaculata (Haworth)
Five-spotted hawk moth. In a wide range of habitats, especially in cultivated habitats and agriculture land. Larvae pests of tomato.

SPHINGINAE



Sphinx dollii Neumoegen
Doll's sphinx moth. In open juniper forests. Larvae on juniper.

© Copyright 2026 University of Idaho Barr Entomological Museum. Downloading, printing, sharing and distribution are allowed. Partial reproduction for non-commercial purposes allowed if original source is acknowledged. Unauthorized sale is strictly prohibited. This poster was compiled by Eli Carmona (photography, photo editing) and Luc Leblanc (research, design, maps). All photographed specimens are deposited at the William F. Barr Entomological Museum (University of Idaho, Moscow, ID). Common names and ecological information from the PNW moths website (<https://pnwmoths.biol.wvu.edu/>).

☀ Diurnal 🌙 Nocturnal
🌸 Adults feed on flower nectar
✖ Adults do not feed
50 mm Wingspan width
1 inch